

The Benefits of Gold Eyelid Implants for Temporary Facial Palsy Patients

Blink out Lagophthalmos

Blinkeze™ External Lid Weights provide an immediate, voluntary blink mechanism for treating ocular exposure associated with temporary facial paralysis or Bell's palsy.

- **Convenient**

Attachment of a Blinkeze External Lid Weight to the upper eyelid is quick and easy using MedDev EyeClose® double-sided, hypoallergenic adhesive strips.

- **Comfortable**

Blinkeze External Lid Weights stay securely adhered to the eyelid for continuous corneal protection without patient discomfort.

- **Restores a Voluntary Blink**

Wearing Blinkeze External Lid Weights for as long as the lagophthalmos persists ensures an effective “blink” to prevent dehydration of the cornea and the resulting ocular complications.

- **Simplifies Supportive Eye Care**

Continuous use of Blinkeze External Lid Weights decreases the patient's reliance on ophthalmic ointments and lubricants. The need for occlusion therapy may be eliminated.

- **Improves Appearance**

Blinkeze External Lid Weights are made of tantalum that is painted a skin tone on the exposed side to approximate a patient's complexion.



Blinkeze External Lid Weight

Description

Blinkeze External Lid Weights are designed for the non-surgical treatment of the functional deficits of lagophthalmos, usually resulting from facial paralysis, specifically the orbicularis oculi muscle. The Blinkeze External Lid Weight is adhered to the surface of the upper lid and uses gravity to assist in closing the eyelid during relaxation of the levator muscle. By restoring a functional “blink” mechanism, Blinkeze External Lid Weights prevent dehydration of the corneal epithelium, protecting it from further ocular complications such as erosion, ulcers, perforations, reduction of visual acuity, and even blindness.

EyeClose® double-sided, hypoallergenic adhesive strips (Catalog # LL 0505) provide a convenient and reliable method of securing the weight to the upper lid. The weight can be worn on a continuous basis by patients with temporary paralysis or the weight can be worn as a trial before implantation to confirm adequate closure.

Blinkeze External Lid Weights are manufactured from pure tantalum, a dense, inert metal with high biocompatibility. The weight's exterior surface is painted in a selection of skin-tones to approximate a patient's complexion. Weights range from 0.6 g to 2.8 g in 0.2-g increments.

Product Information

Blinkeze™ External Lid Weights

Non-Implantable

CATALOG #	DESCRIPTION	NOMINAL LENGTH	WIDTH
<i>Standard Sizes</i>			
TEW 6006	0.6 grams	7.1 mm	5.0 mm
TEW 6008	0.8 grams	9.5 mm	5.0 mm
TEW 6010	1.0 grams	11.9 mm	5.0 mm
TEW 6012	1.2 grams	14.3 mm	5.0 mm
TEW 6014	1.4 grams	16.7 mm	5.0 mm
TEW 6016	1.6 grams	19.0 mm	5.0 mm
TEW 6018	1.8 grams	21.4 mm	5.0 mm
<i>Special Sizes</i>			
TEW 6020	2.0 grams	23.8 mm	5.0 mm
TEW 6022	2.2 grams	26.2 mm	5.0 mm
TEW 6024	2.4 grams	28.6 mm	5.0 mm
TEW 6026	2.6 grams	30.9 mm	5.0 mm
TEW 6028	2.8 grams	33.3 mm	5.0 mm

Weight Selection

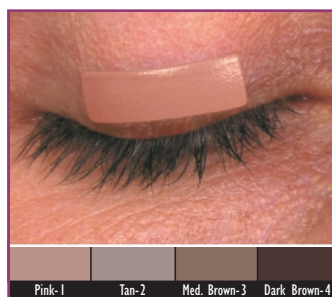
The appropriate Blinkeze External Lid Weight is determined by testing the patient with different weights from the Tantalum Eyelid Weight Sizing Set. The correct weight allows the eyelid to close without difficulty while also inducing a slight ptosis of no more than 1.0 mm. This slight ptosis is typically corrected as the levator muscle strengthens with prolonged wearing of the weight.

CATALOG #	DESCRIPTION
TEW 7000	Standard Sizing Set – Includes 7 weights from 0.6 g to 1.8 g, storage case, 100 adhesive strips, and a skin tone selector card
TEW 7004	Special Sizing Set – Includes 5 weights from 2.0 g to 2.8 g, storage case, 100 adhesive strips, and a skin tone selector card

Skin Tone Selection

Specify the corresponding color suffix from the Skin Tone Selector Card that best approximates the patient's complexion:

-1 (Pink/Neutral)	-2 (Tan)	-3 (Medium Brown)	-4 (Dark Brown)
-------------------	----------	-------------------	-----------------



Blinkeze Skin Tone Colors



Patient Treatment Kit

Accessories

CATALOG #	DESCRIPTION
LL 0505	EyeClose® Double-Sided Adhesive Strips Box of 100 strips (non-sterile)

Product Identification: Weight (grams) is marked on the concave side of each Blinkeze External Lid Weight.

Product Packaging: Blinkeze External Lid Weights are supplied NON-STERILE in a patient treatment kit. Each kit contains one hundred double-sided, hypoallergenic EyeClose Adhesive Strips (non-sterile), an application mirror, and storage for an additional weight.

Product Ordering: Blinkeze External Lid Weights and EyeClose® Replacement Adhesive Strips are available only on the order of a physician. Patients with a prescription may order directly from FCI Ophthalmics by calling FCI Customer Service at 800.932.4202 (M-F 9 am to 5 pm EST). FCI Ophthalmics will obtain authorization from the prescribing physician before sending the prescription. Payment can be made by credit card, or by mailing a check or money order in advance to FCI Ophthalmics.

Caution: Federal (U.S.A.) Law restricts this device to sale by or on the order of a physician. Blinkeze External Lid Weights are for external use only.

BIBLIOGRAPHY

- Seiff SR, Boerner M, Carter SR. Treatment of Facial Palsies with External Eyelid Weights. American Journal of Ophthalmology, 120: pp 652-657, 1995.
- Shepler TR, Seiff SR: Use of Isobutyl Cyanoacrylate Tissue Adhesive to Stabilize External Eyelid Weights in Temporary Treatment of Facial Palsies. Ophthalmic Plastic and Reconstructive Surgery, Vol. 17, No. 3: pp 169-173, 2001.

A more complete bibliography is available upon request.



P.O. Box 465
Marshfield Hills, MA 02051
Telephone: **800.932.4202**
781.826.9060
Facsimile: **781.826.9062**
E-mail: **info@fci-ophthalmics.com**